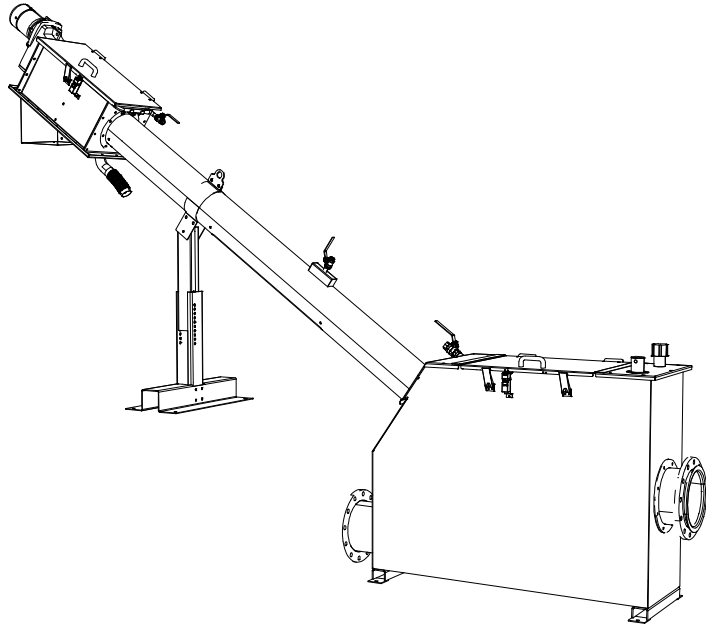
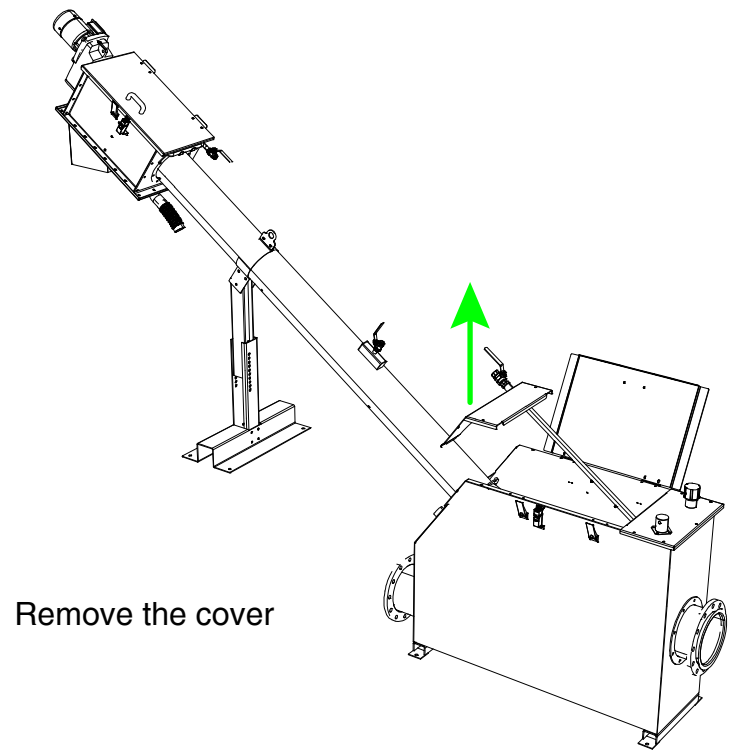


1

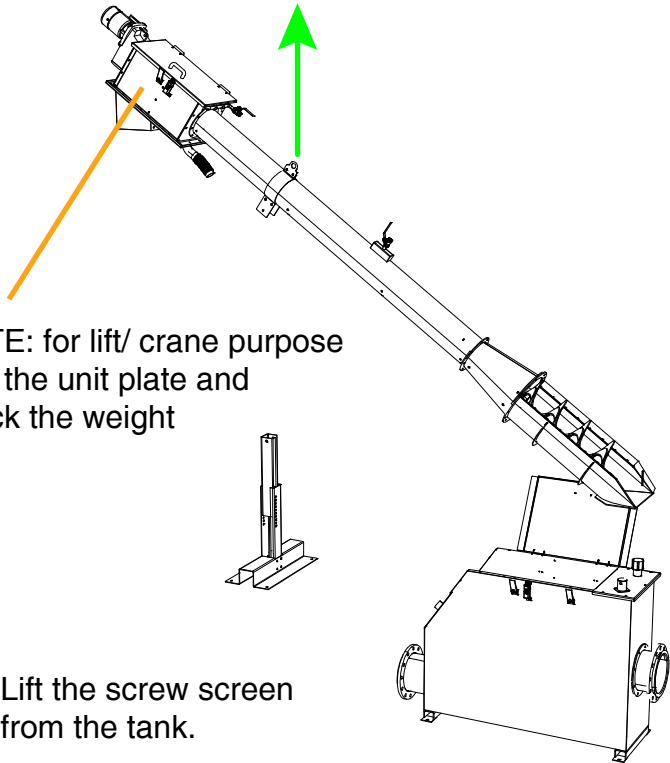


2



Remove the cover

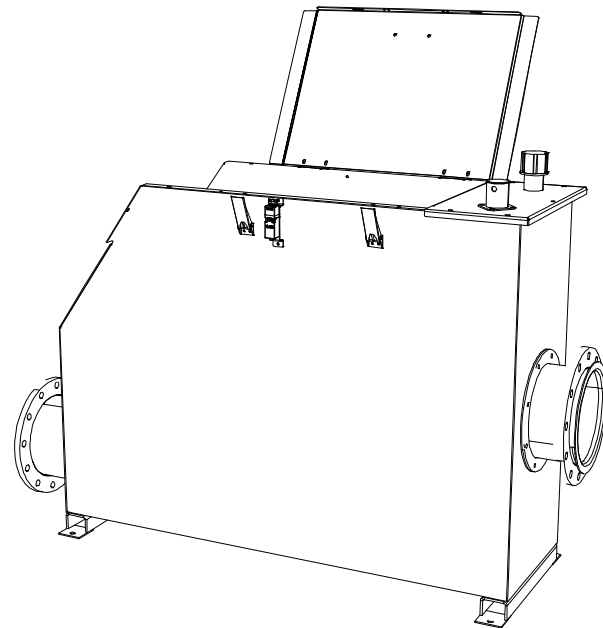
3

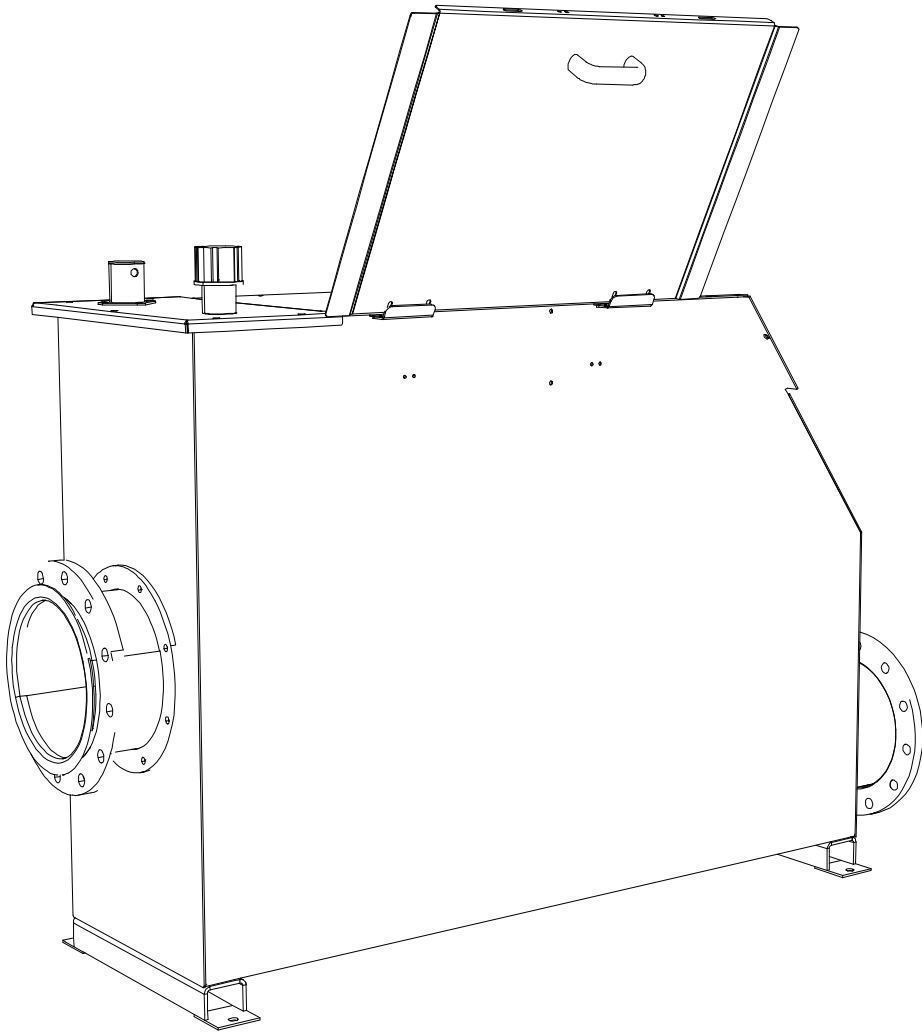


NOTE: for lift/ crane purpose look the unit plate and check the weight

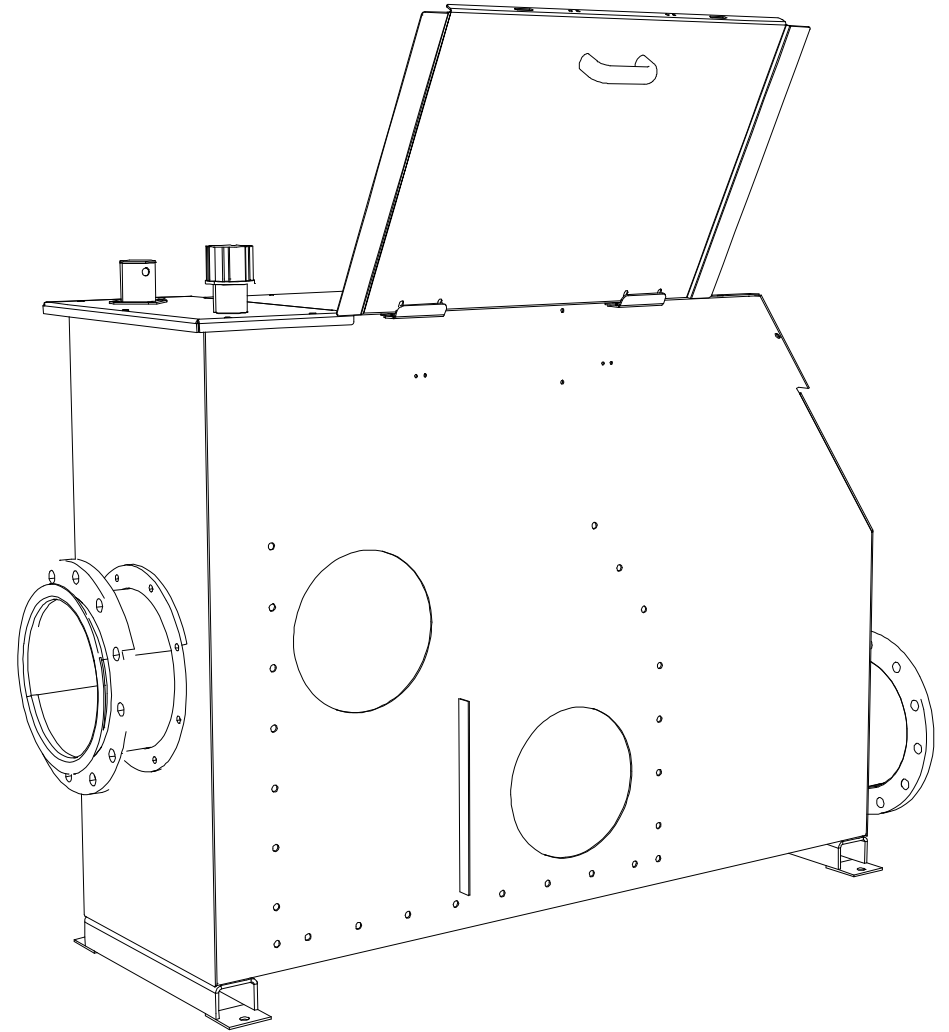
Lift the screw screen from the tank.

4



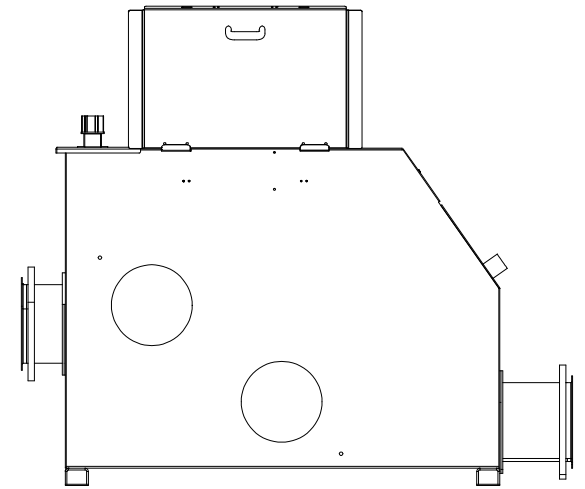
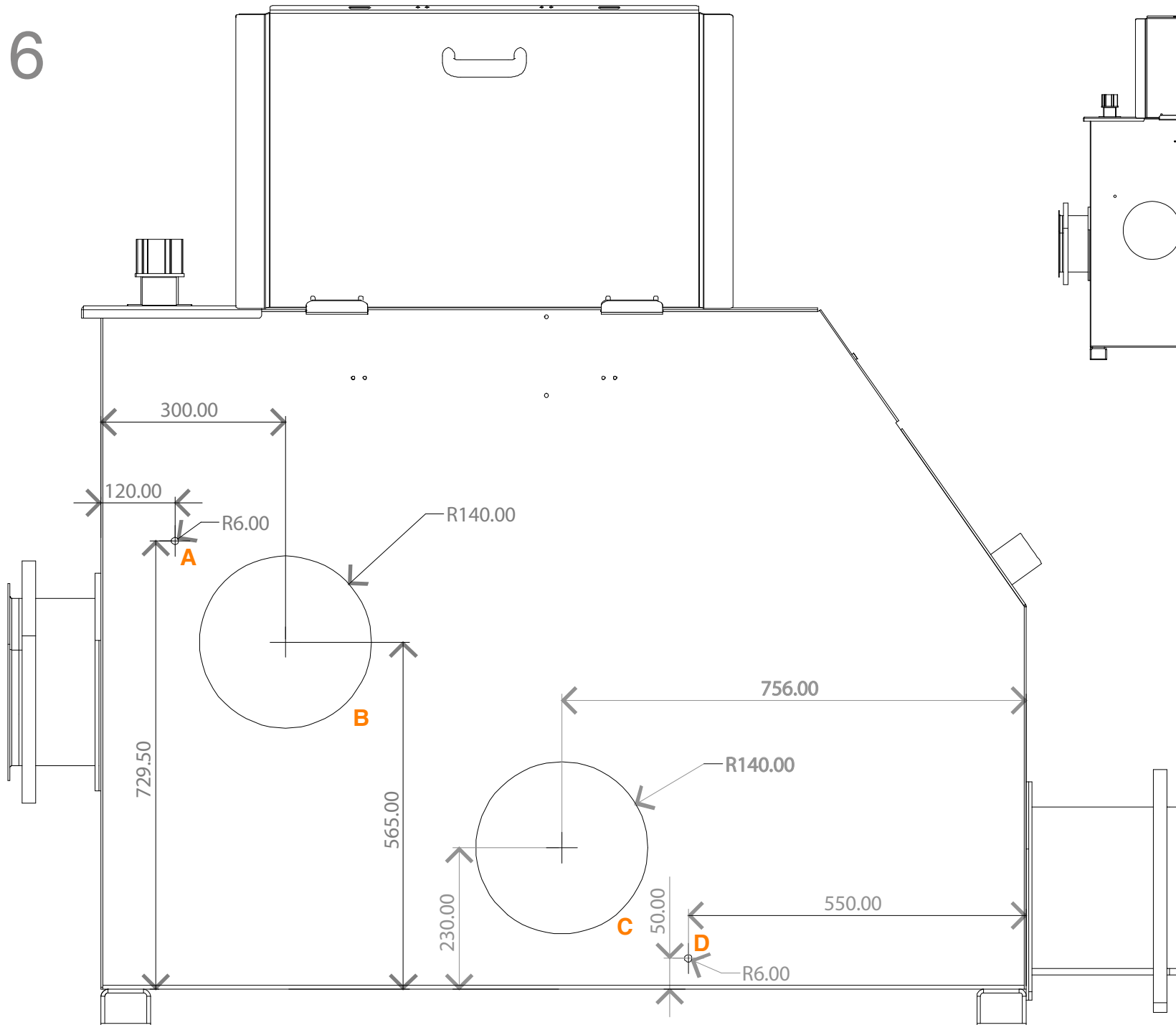


Existing tank



Existing tank modify for bypass

6

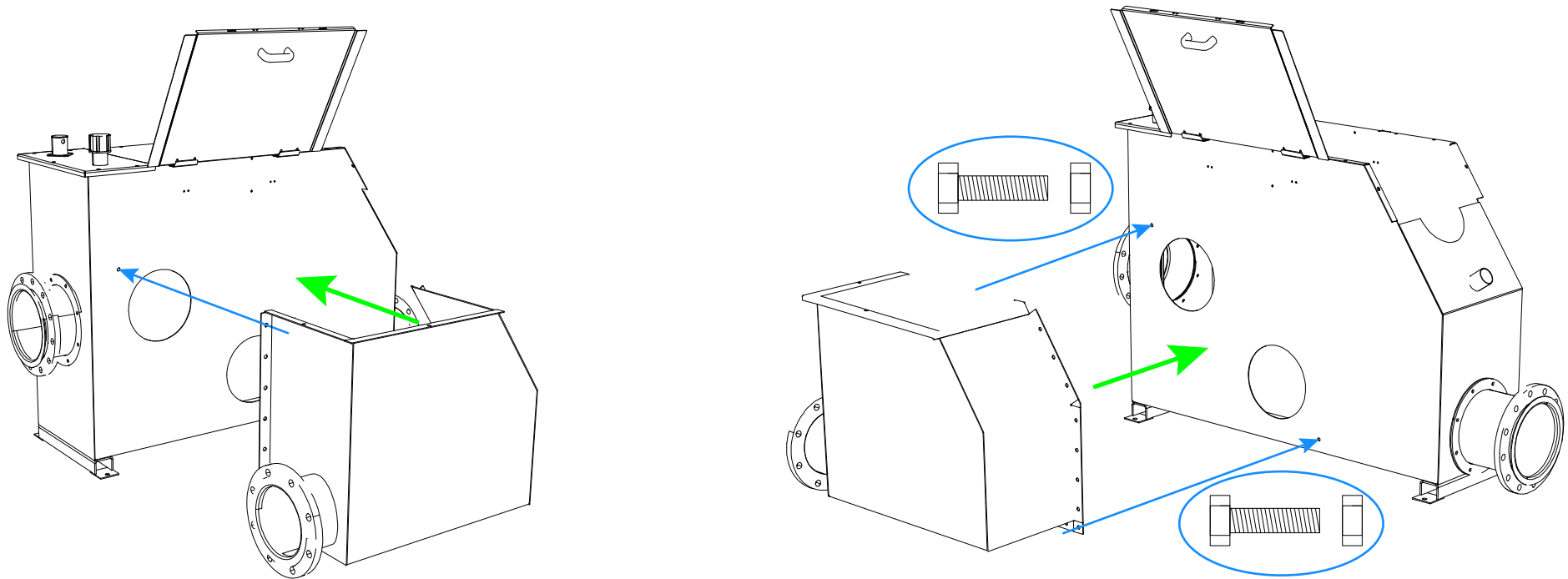


How it should look

N°4 Holes to cut: A, B, C, D  
Suggested  
Drill M6:A,D  
Plasma Cutter:B,C

Unit:mm

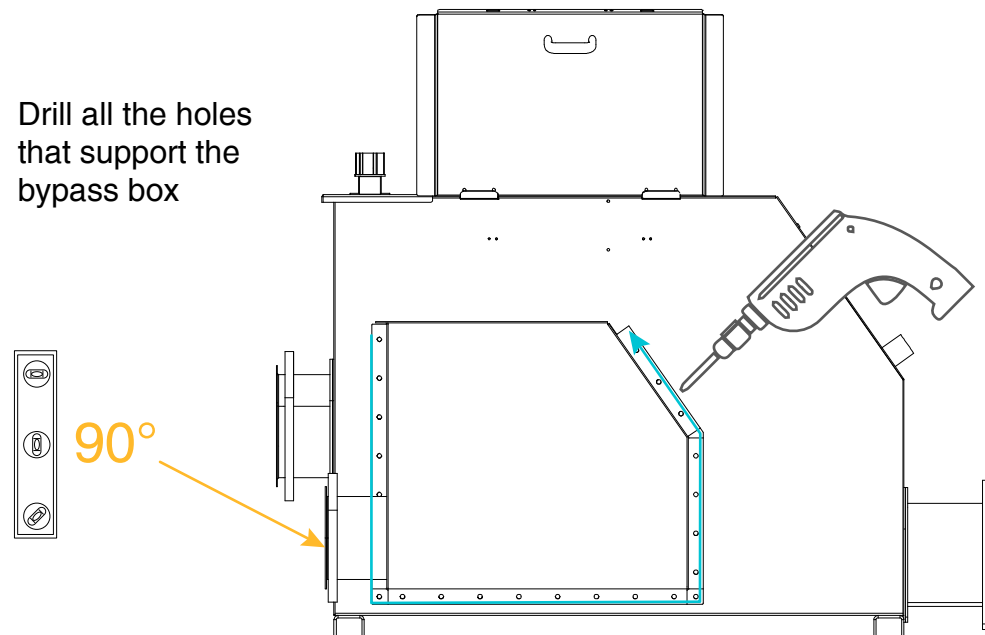
7



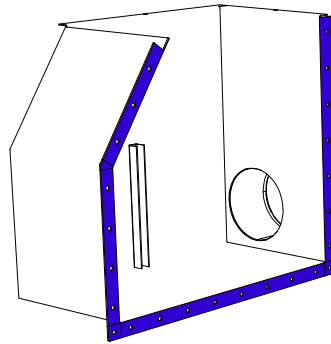
Ensure the bypass box to the CFTC Tank with N°2 bolts and N°2 nuts.

8

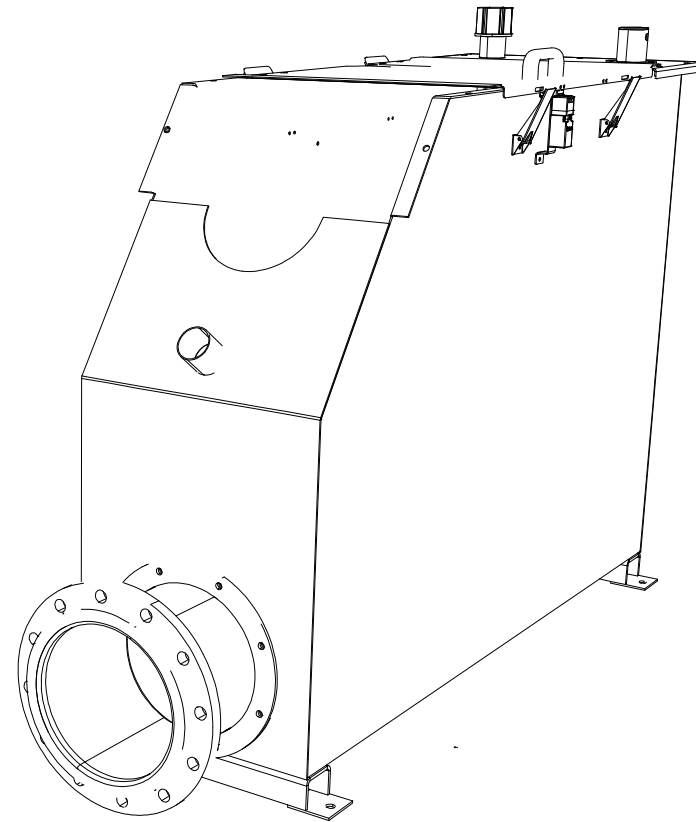
Drill all the holes that support the bypass box



# 9

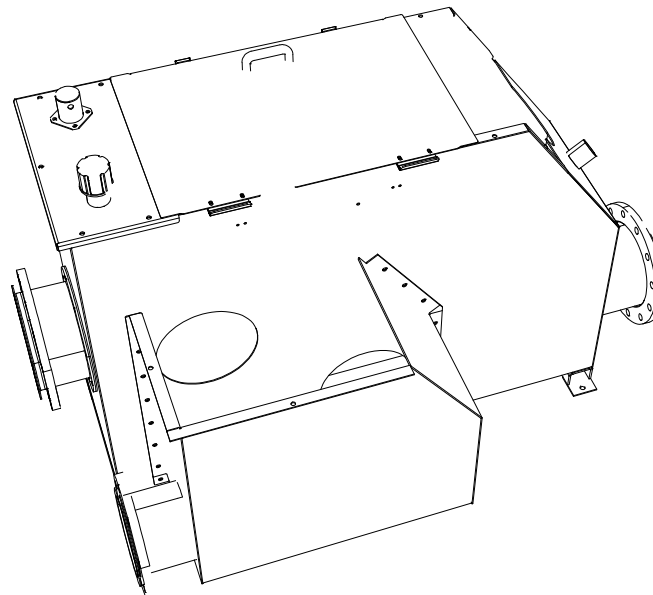
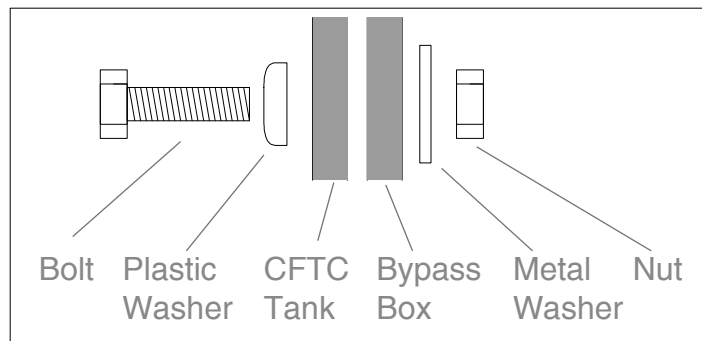


Remove the bypass box and apply the foam surround the flanged face (blue).

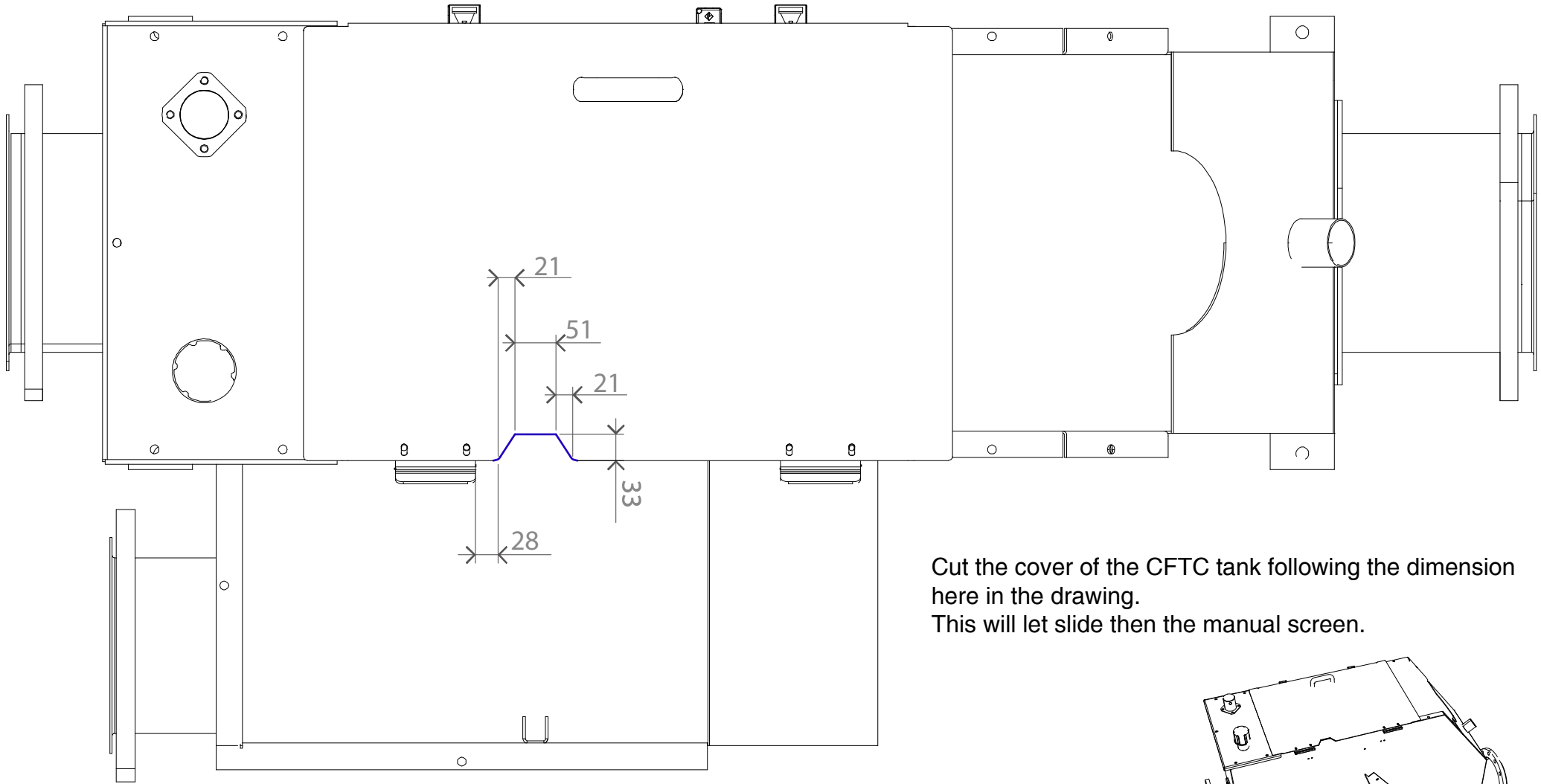


# 10

Bolt the bypass box to the CFTC tank following the scheme here below.

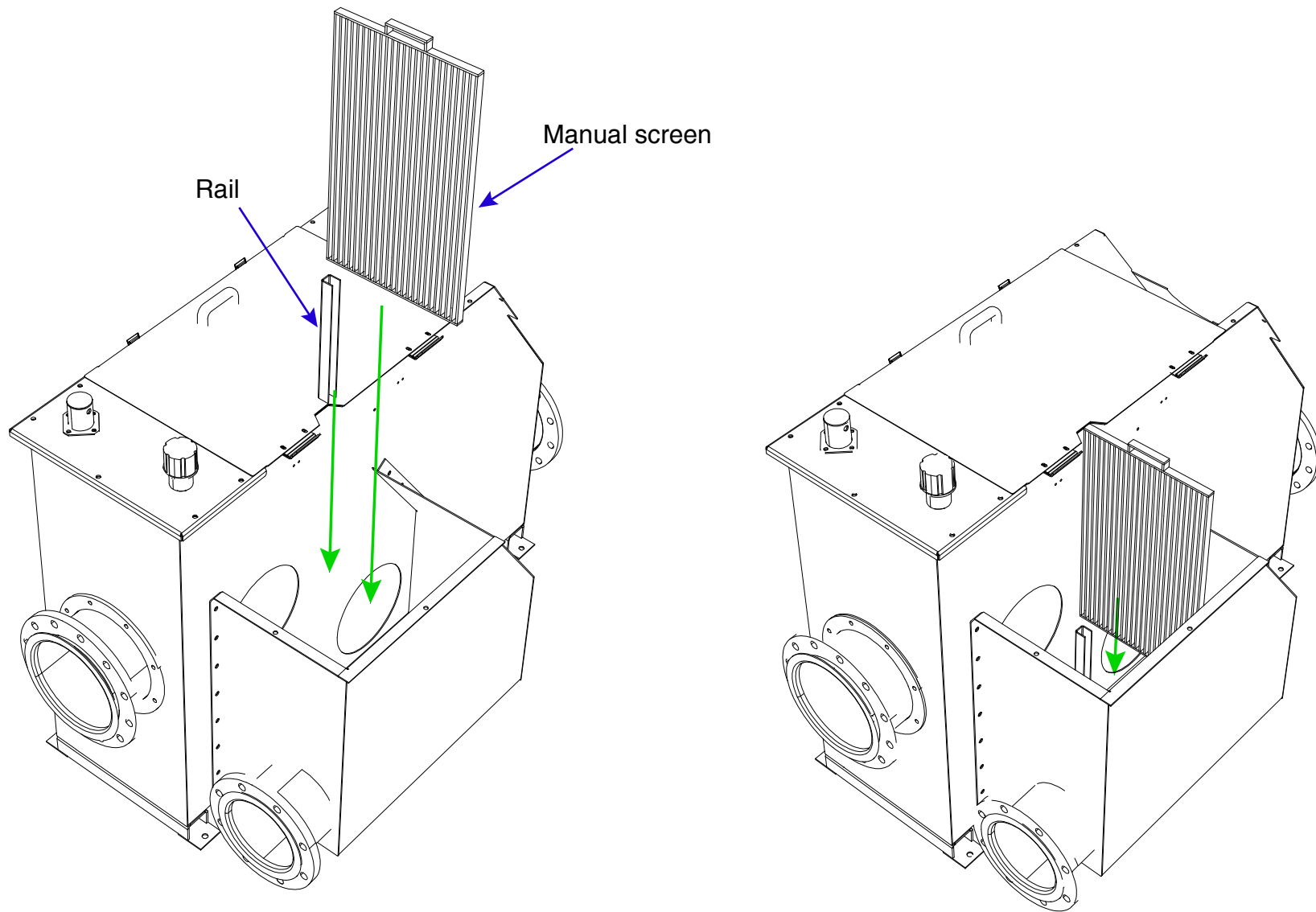


Inside the bypass box apply silicone between the the tank and the box for for seal purpose.



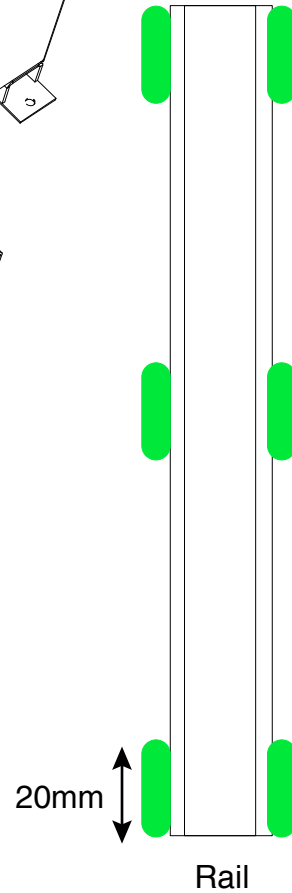
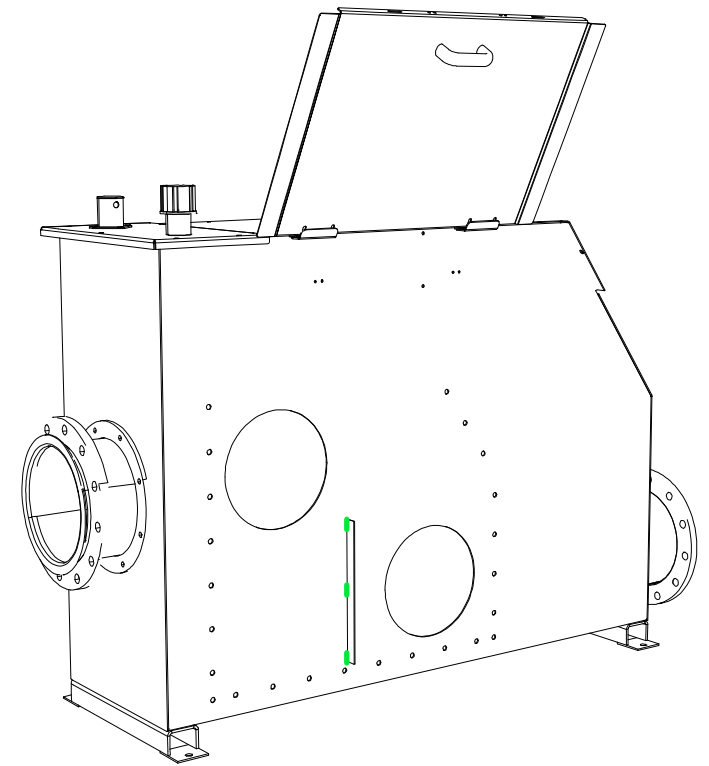
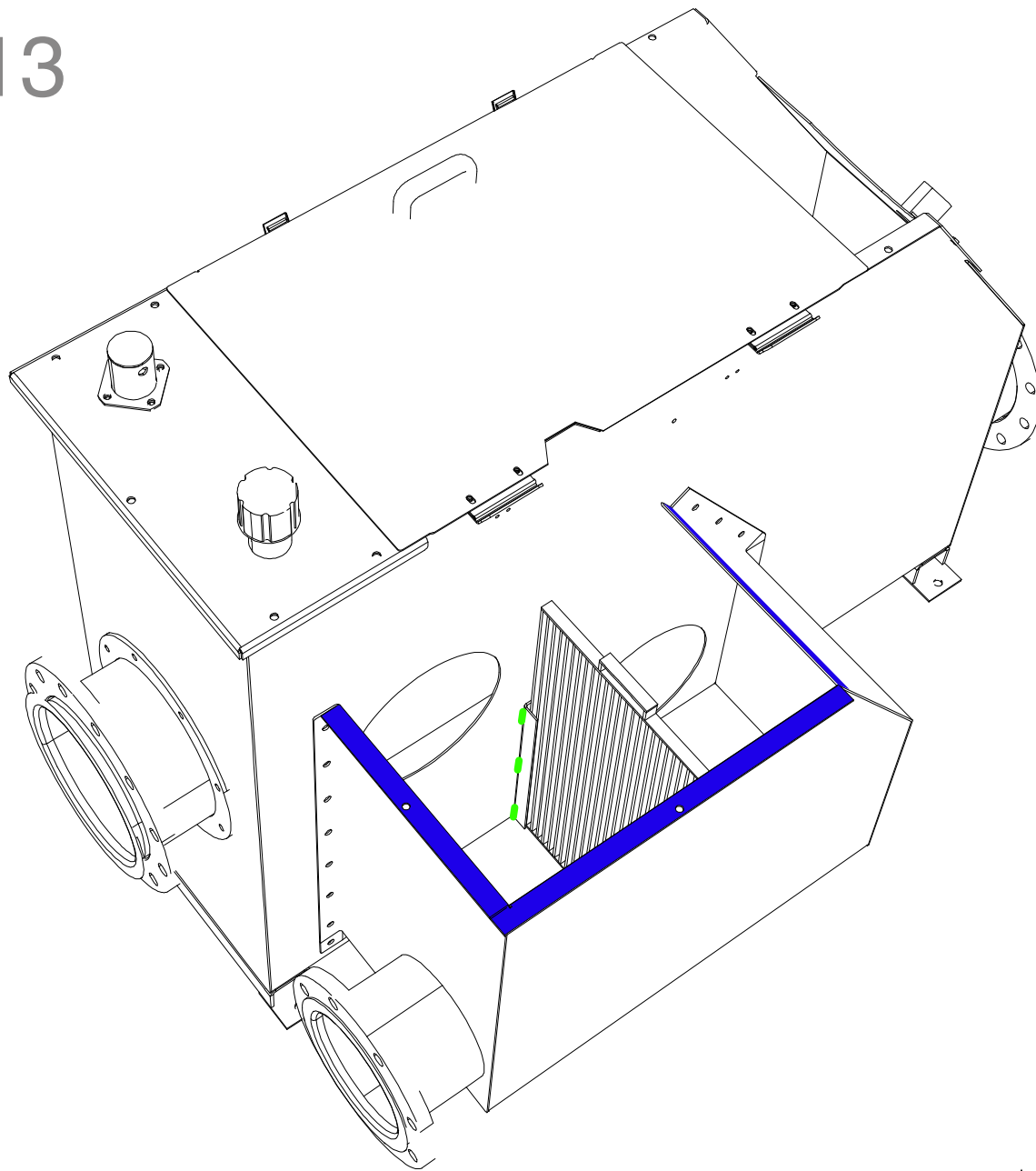
Cut the cover of the CFTC tank following the dimension here in the drawing.  
This will let slide then the manual screen.

Unit:mm

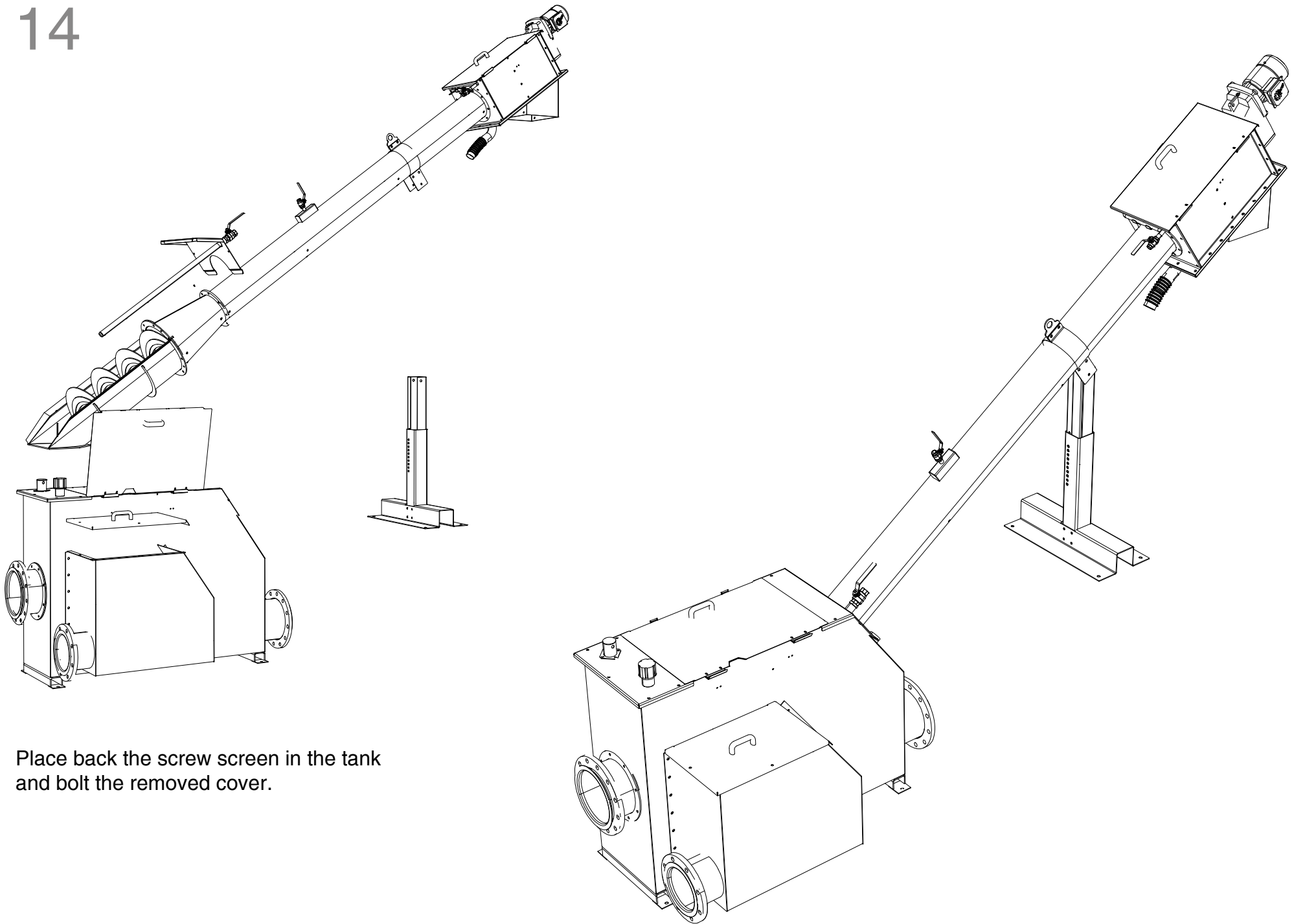




# 13



Weld the rail to the tank.  
N°6 MIG Welding lines (green) 20mm long each  
Apply foam (Blue)



Place back the screw screen in the tank  
and bolt the removed cover.